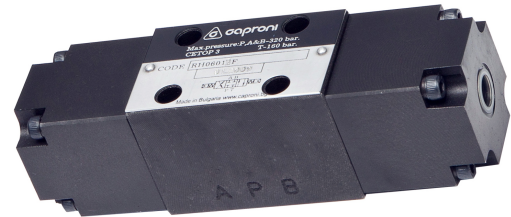


RH06...2F...

GENERAL DESCRIPTION

RH06...2F...

- ✓ 4/3- and 4/2- way directional control valves with pneumatic operation
- ✓ Reliability and long life
- ✓ Mounting surface CETOP3 ; NG6



The RH06...2F... valves consist of a spool , housing , springs and pneumatic control. The valves are used for hydraulic power control. This model is designed with two-spring centered spool about 4/3- and 4/2- valves. The housing has 5-chambers and vertical “T” duct.

ORDERING CODE

	RH	06		F				
Directional control valve <hr/>								Omit -Without spacers S-with spacers
Nominal size <hr/>								Backing of the housing N T
Functional symbol <hr/>								Omit -without detent D-with detent Detent*
Type of control <hr/>	hydraulic - 2 pneumatic - 6	Modification						
* Only for type of control-7								

FUNCTIONAL SYMBOLS

Contact Office for spool options and availability - 03 9874 1155

directional control valve RH06

DIRECTIONAL CONTROL VALVES-CETOP 3

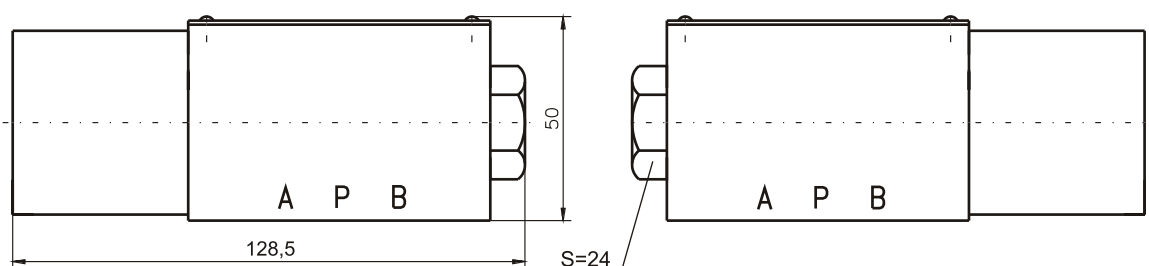
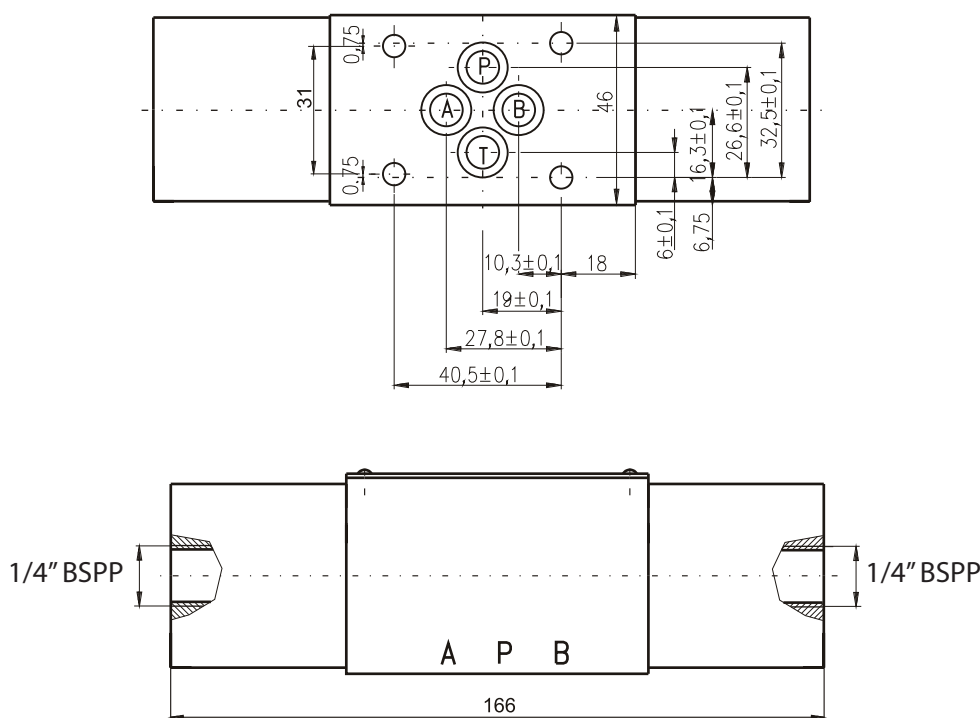
RH06...2F...

TECHNICAL DATA

DATA	UNIT	VALUE/RANGE
Weight	-three positional -two positional	2,2 1,6
Max. Pressure	port P , A & B port T	32 16
Rated flow	(at $\Delta p=0,1\text{MPa.}$)	11...20
Pilot pressure	-P _{min} -P _{max}	1...1,5+P _T 21

DIMENSIONS

All dimensions are shown in mm [Except side pilots 1/4" BSPP shown below]



DIRECTIONAL CONTROL VALVES-CETOP 3

RH06...2F...

SEALS

