

DIRECTIONAL CONTROL VALVES-CETOP 3

RH06...6F..

GENERAL DESCRIPTION

RH06...6F...

- ✓ 4/3- and 4/2- way directional control valves with pneumatic operation
- ✓ Reliability and long life
- ✓ Mounting surface CETOP3 ; NG6



The RH06...6F... valves consist of a spool , housing , springs and pneumatic control.

The valves are used for hydraulic power control. This model is designed with two-spring centered spool about 4/3- and 4/2- valves. The housing has 5-chambers and vertical "T" duct.

ORDERING CODE

	RH	06			F			
Directional control valve							Spacers Omit -Without spacers S -with spacers	
Nominal size							Backing of the housing N T	
Functional symbol							Detent* Omit -without detent D -with detent	
Type of control	hydraulic - 2 pneumatic - 6						Modification	

* Only for type of control-7

FUNCTIONAL SYMBOLS

Contact Office for spool options and availability - 03 9874 1155

directional control valve RH06

DIRECTIONAL CONTROL VALVES-CETOP 3

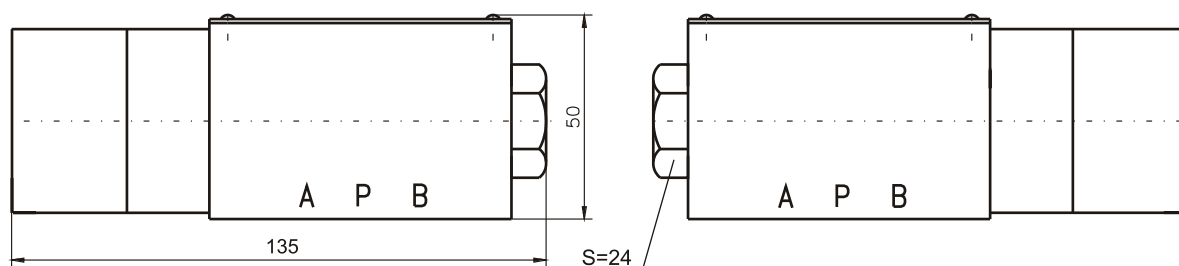
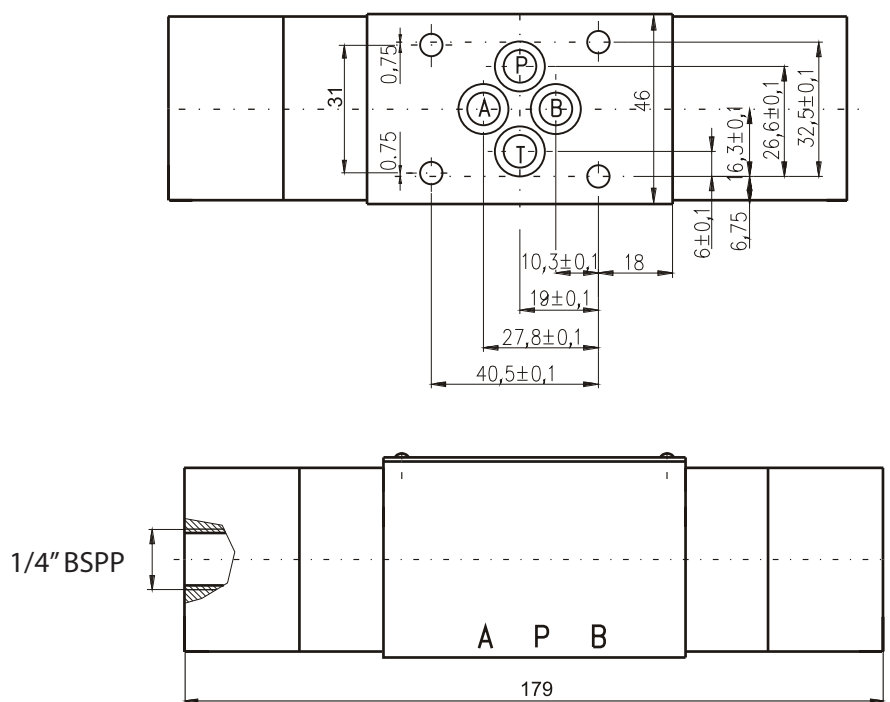
RH06...6F...

TECHNICAL DATA

DATA	UNIT	VALUE/RANGE
Weight	-three positional -two positional	1,950 1,450
Max. Pressure	port P , A & B port T	32 16
Rated flow	(at $\Delta p=0,1\text{MPa}$)	11...20
Pilot pressure	-P _{min} -P _{max}	0, 2 1

DIMENSIONS

All dimensions are shown in mm [Except side pilot 1/4" BSPP shown below]



directional control valve RH06

DIRECTIONAL CONTROL VALVES-CETOP 3

RH06...6F...

SEALS

