

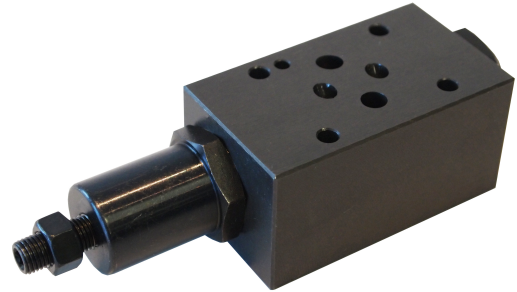
MODULAR VALVES - MPR

Pressure Reducing

Cetop 3

Characteristics :

- Highest performance in NG 6.
- Direct operated pressure reducing valve.
- Sandwich plate design.
- 4 pressure adjusting ranges.
- 3 optional effective directions of flow.
- Pressure reduction in ports A, B or P.
- Connections to DIN, ISO and CETOP.



Specification :

Maximum flow	40 l /min {10.6 GPM}
Maximum operating pressure	350 bar {5075 PSI}
Pressure adjusting range	1: 3~35 bar
	2: 8~70 bar
	3: 35~160 bar
	4: 70~250 bar

