

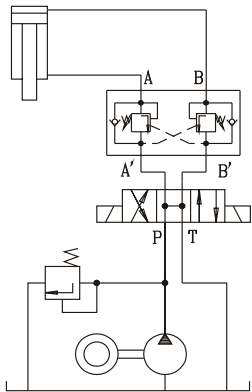
"OVERCENTER" VALVES WITH INTERNAL PILOT OPERATION

OWC6M/25...

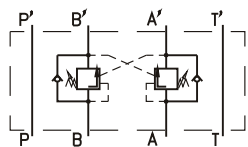
DESCRIPTION

- ✓ "OVERCENTER" valves with internal pilot operation for modular mounting-OWC6M/25...
- ✓ The "OVERCENTER" valves are designed to control moving loads and to prevent loads from running ahead of pump. They lock the load in any position without drift and protect of overloading and thermal expansion by open center control valves.
- ✓ Mounting surface CETOP3 ; NG6

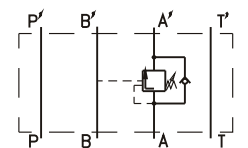
APPLICATIONS



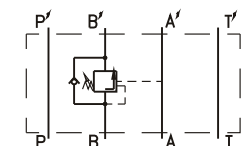
SYMBOL



OWC6M/25AB

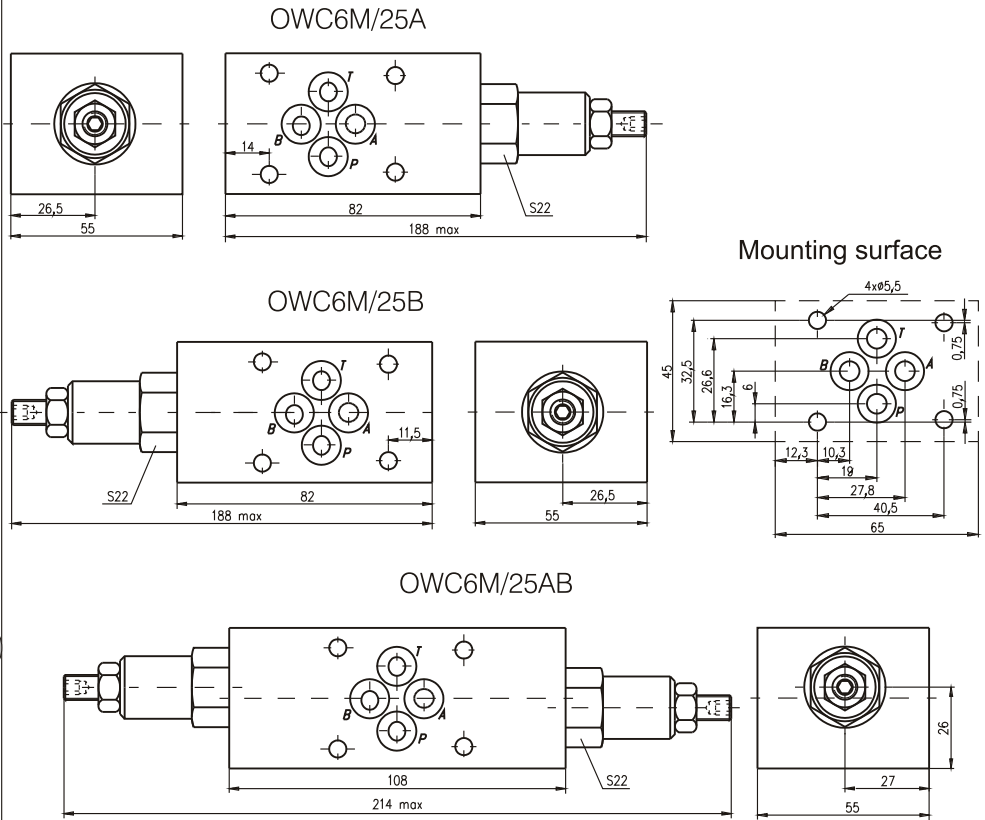


OWC6M/25A



OWC6M/25B

DIMENSIONS



ORDERING CODE

OWC 6 M / 25 ***

"OVERCENTER"

Nominal bore 6mm

Modular mounting

Rated pressure

up to 250 bar.

Valve position:

at line A - A

at line B - B

at line A&B - AB

TECHNICAL DATA

Rated pressure	40...250 bar
Rated flow	for all types 20 l/min
Pressure ratio P_w/P_p (work/pilot)	for all types 4/1
Working liquid-hydraulic oils with characteristics:	
-viscosity	10...400 cSt
-degree of filtration	0,025 mm
-temperature	-20...+80°C