

PILOT OPERATED CHECK VALVES

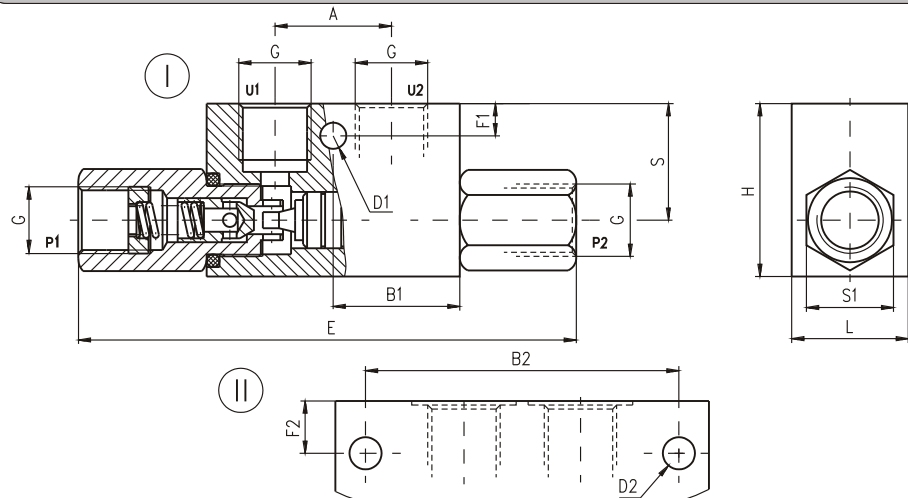
KOHU...

DESCRIPTION

✓ Check valves with hydraulic operation for pipe mounting-KOHU...

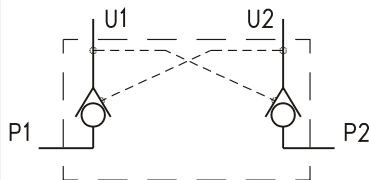
✓ Hydraulically operated check valve is designed to allow working liquid passing in one direction freely (U_1 to P_1 , U_2 to P_2) and at availability of control signal in the opposite direction (P_1 to U_1 , P_2 to U_2). The valve ensures hydraulic "locking" of the hydraulic cylinders, i.e. Providing their stability under load at neutral position of the directional control valve.

DIMENSIONS



TYPE	fig.	A	B1	B2	D1	D2	E	F1	F2	G	H	L	S	S1
mm														
KOHU 1/4	I	29	31,5		6,5		127	8		G1/4	43	29	29	22
KOHU 3/8	I	29	31,5		6,5		127	8		G3/8	43	29	29	22
KOHU 1/2	II	40		75		8,5	174		17	G1/2	60	39	40	32
KOHU 1/4-K1	I	29	31,5		6,5		106	8		G1/4	43	29	29	22
KOHU 3/8-L	I	38	40		6,5		128	8		G3/8	40	29	26	24

SYMBOL



ORDERING CODE

KOHU *** - ***

Check valve with hydraulic operation

Connecting threads: G1/4 - 1/4
G3/8 - 3/8
G1/2 - 1/2

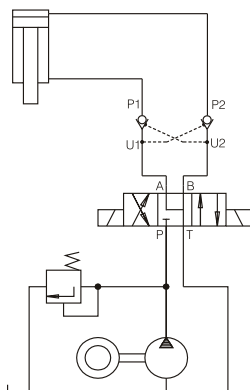
Modification: normal version - omit

K1

see table of dimensions

L

APPLICATIONS



TECHNICAL DATA

Max. Pressure		320 bar
Rated flow	KOHU1/4	12 l/min
	KOHU3/8	20 l/min
	KOHU1/2	45 l/min
	KOHU1/4-K1	12 l/min
	KOHU3/8-L	20 l/min
Cracking pressure (for check valve)	for all types	0,5 bar
Area ratio A1/A2(check valve/piston)	for all types	1/4
Working liquid-hydraulic oils with characteristics:		
-viscosity		10...400 cSt
-degree of filtration		0,025 mm
-temperature		-20...+80°C

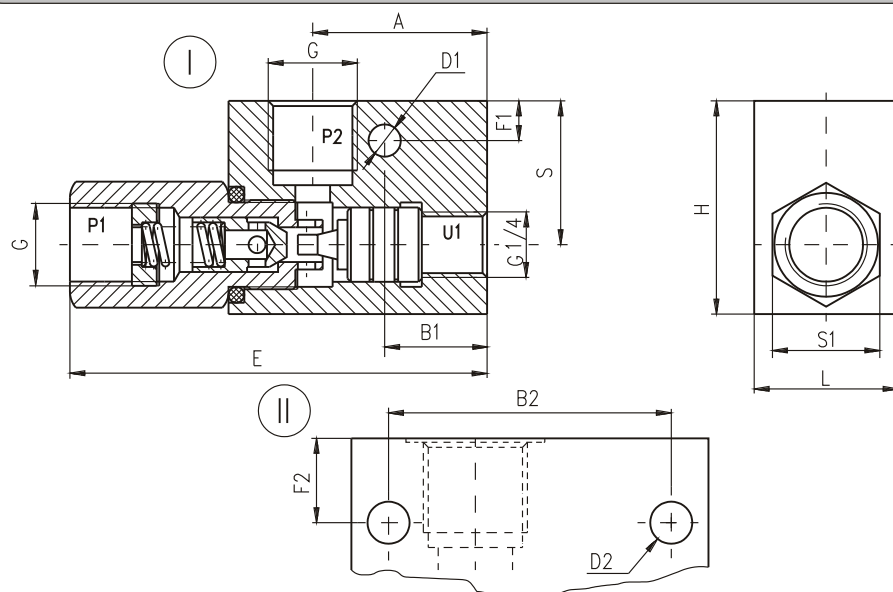
PILOT OPERATED CHECK VALVES

KOHU...-S

DESCRIPTION

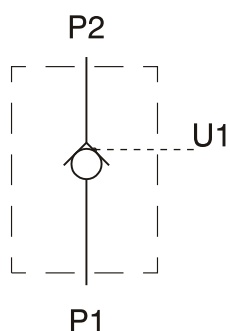
✓ Check valves with hydraulic operation for pipe mounting-KOHU...-S
✓ Hydraulically operated check valve is designed to allow working liquid passing in one direction freely (P_2 to P_1) and at availability of control signal in the opposite direction (P_1 to P_2). The valve ensures hydraulic "locking" of the hydraulic cylinders, i.e. providing their stability under load at neutral position of the directional control valve.

DIMENSIONS



TYPE	fig.	A	B1	B2	C	D1	D2	E	F1	F2	G	H	L	S	S1
mm															
KOHU 1/4-S	I	37	22,5	15	15	6,5	86	8	G1/4	43	29	29	22		
KOHU 3/8-S	I	37	22,5	15	15	6,5	86	8	G3/8	43	29	29	22		
KOHU 1/2-S	II	47	57	24	24	8,5	114	17	G1/2	60	39	40	32		

SYMBOL



ORDERING CODE

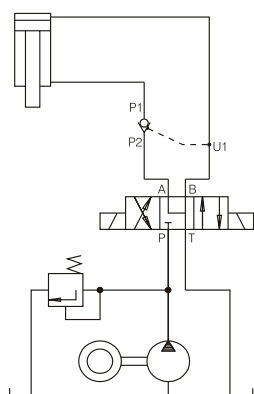
KOHU *** - S

Check valve with hydraulic operation

Connecting threads: G1/4 - 1/4
G3/8 - 3/8
G1/2 - 1/2

Modification

APPLICATIONS



TECHNICAL DATA

Max. Pressure		320 bar
Rated flow	KOHU1/4-S	12 l/min
	KOHU3/8-S	20 l/min
	KOHU1/2-S	45 l/min
Cracking pressure (for check valve)	for all types	0,5 bar
Area ratio A1/A2(check valve/piston)	for all types	1/4
Working liquid-hydraulic oils with characteristics:		
-viscosity		10...400 cSt
-degree of filtration		0,025 mm
-temperature		-20...+80°C