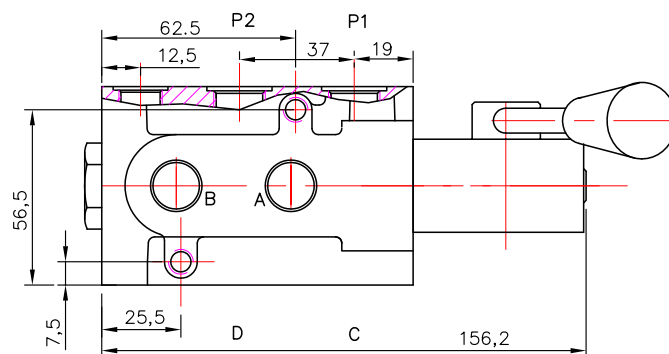
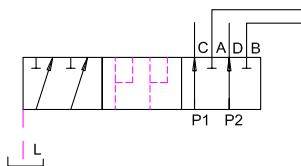


6 PORT SELECTOR VALVE / HANDLE OPERATED

DVH-6/2-A11-GKZ1 are with Hand control system. They are used as link between two consumers and the basic directional valve, when we want to control both consumers alternately by means of one basic directional valve.



| code | Threaded connections |
|------|--------------------------------------|
| G | P1, P2, A, B, C, D – G3/8 ; L = G1/4 |

for stacking 1–5 units

| | | | |
|-----------------|-----------|--------------------|--------|
| Flow rate | | l/min | 50 |
| max P | with L | bar | 315 |
| max P | without L | bar | 210 |
| oil temperature | | °C | –20+70 |
| viscosity | | mm ² /s | 15–380 |
| filtration | NAS1638 | | 9 |

