

directional control valve P35

# Type: P35



## Description.

For starting, controlling and stoping the working fluid between the generator of pressured flow, the consumers and the Tank.

## Specifications: Основные показатели:

Max. operating pressure  
max. bar

P=250 bar

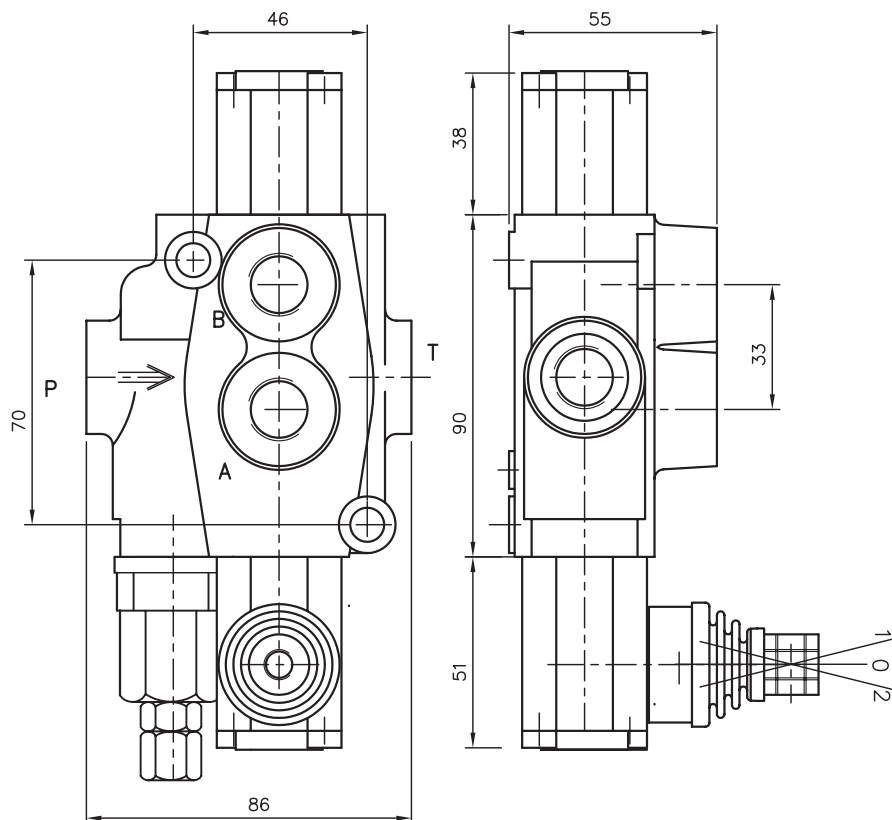
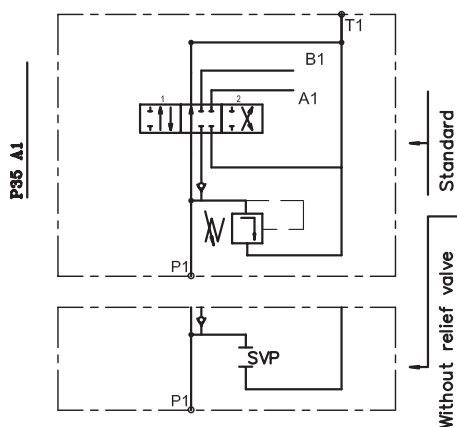
T=50 bar

A, B=300 bar

35 l/min

(See operating diagram)

Nominal flow



P35

R

A

1

G

KZ1

T

E

directional control valve type

inlet high pressure – right

first spool distribution type

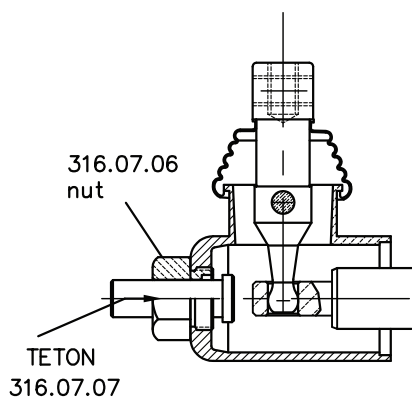
spool control/detend and ets

ports /treads/

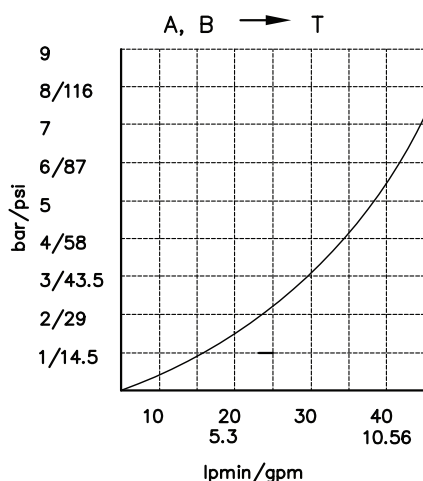
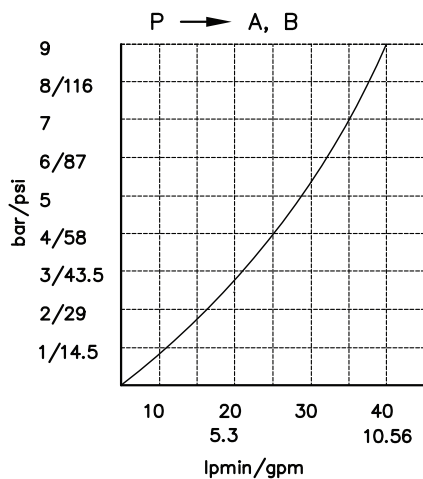
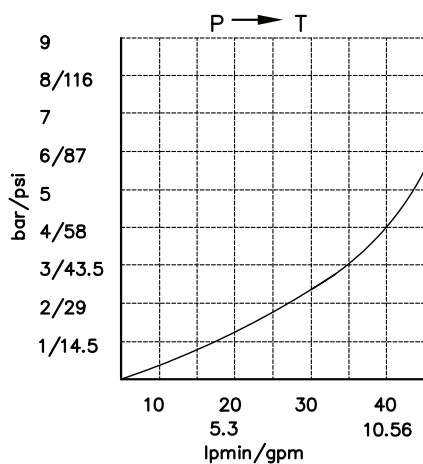
general operation feature

with "Teton"

with electric switch



P40 directional control valve



## directional control valve P35

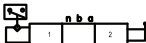
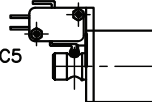
Table 5

code	spool type
A	
B	
C	
D	
E	
F	
M	
N	
O	
P	
Q	
R	

Table 6

code	spool control
1	
2	
3	
4	
5	
6	
7	
8	
9	
10	
11	

Table 7

code	incorporated microswitch		
E		mikroswitch type Omron-V 165 I C5 	
code	ports (treads)		
	P	A ; B	T
M	M18x1.5	M18x1.5	M18x1.5
G	G3/8	G3/8	G3/8
S	3/4-16UNF	3/4-16UNF	3/4-16UNF

kind of hand control ; вид ручного управления

code	feature	code	feature	code	feature
KZ		KY		KI	
KZ1		KY1		KI1	
KZ0		KY0		KI0	
KZ01		KY01		KI01	
without hand control					

directional control valve P35

