

Type: P80

HYDRAULIC DIRECTIONAL CONTROL VALVES



Description

For starting, controlling and stopping the working fluid between the generator of pressured flow, the consumers at the Tank.

Specifications

1. Valve monoblock	
2. Mounting	3 bolts M8
3. Pressure connections	internal thread
4. Ambient temperature	-40C...+60C
5. Pressure medium	mineral oil based hydraulic oil
6. Viskosity	12...800 mm ² /s permissible range 20...100 mm ² /s recommended range
7. Fluid temperature	- 15C...+80C
8. Filtration	Oil contamination 10 to NAS1638
9. Max. operating pressure max. bar	P = 250 bar T = 50 bar A, B = 300 bar
10. Leakage (\boxtimes , \boxtimes - \boxtimes)	18 cm ³ /min at 120 bar
11. Nominal flow	80 l/min (see "operating" diagram)
12. Spool stroke	\pm 7 mm
13. Actuating force	< 220 N in spool axis direction

directional control valve P80

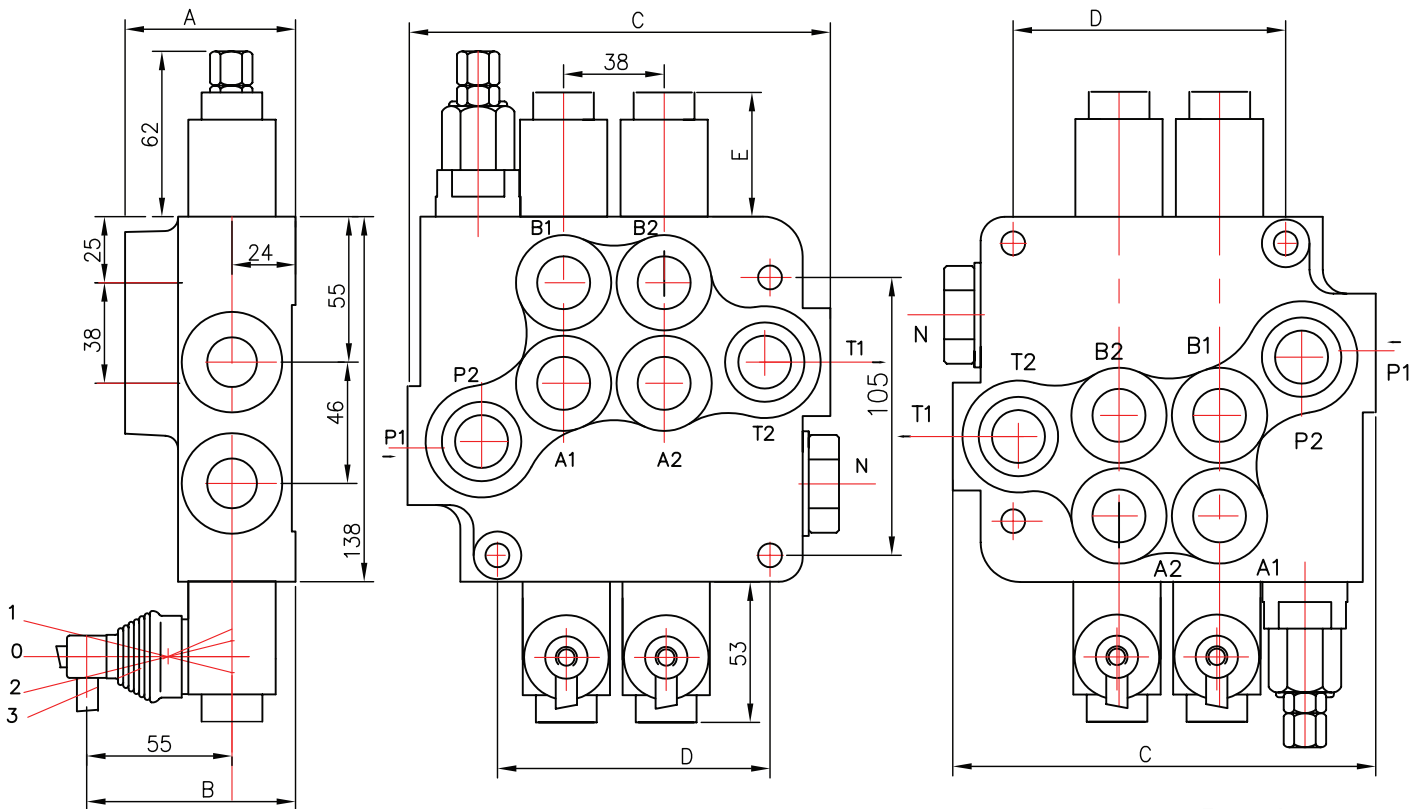


Table 1

	A	B	C	D	P1	P2	T1	T2
P80	65	79	107	65	*	*	—	—
2P80	80	94	160	103	*	*	*	*
3P80	80	94	198	141	*	*	*	*
4P80	80	94	242	179	*	*	*	*
5P80	80	94	280	217	*	*	*	*
6P80	80	94	318	255	*	*	*	*

Table 2

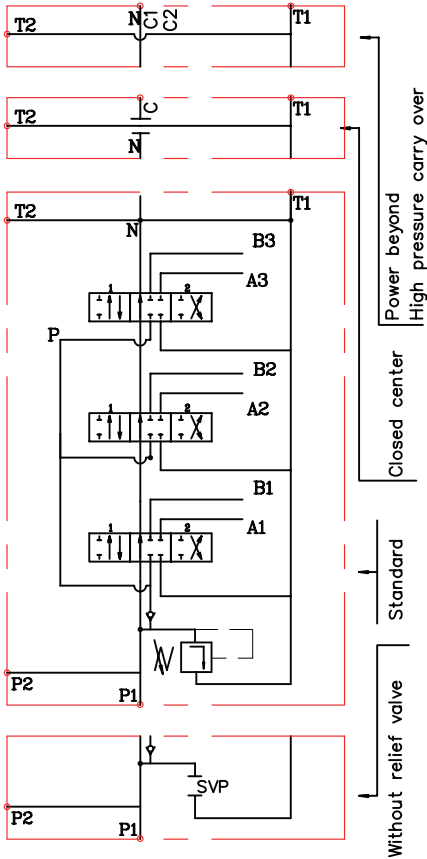
Spool control	E
1, 4, 5, 6, 7, 8, 9, 10, 11,	40
2, 3, 12, 14	72
13	44

0
 2
 P80
 R
 1
 A
 1
 A
 1
 G
 KZ1
 T
 H
 E
 C2
 11

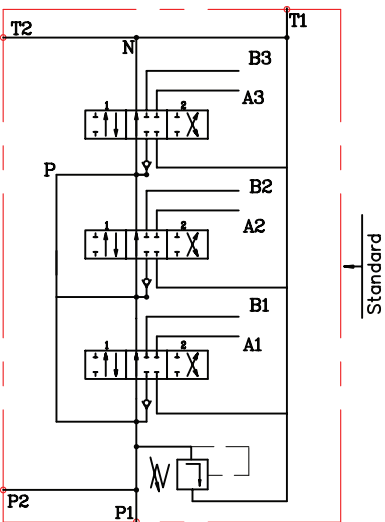
block with common check valve
 number of spools
 directional control valve type
 inlet high pressure – right
 way of distribution/parallel
 first spool distribution type
 spool control/detend and ets
 second spool distribution type
 spool control/detend and estr
 ports /treads
 general operation feature
 with "teton"
 operation feature /neumatic
 1st electric switch
 high pressure carry over
 bonnection ports in use

directional control valve P80

03P80 1A1A1A1



3P80 1A1A1A1



3P80 2A1A1A1

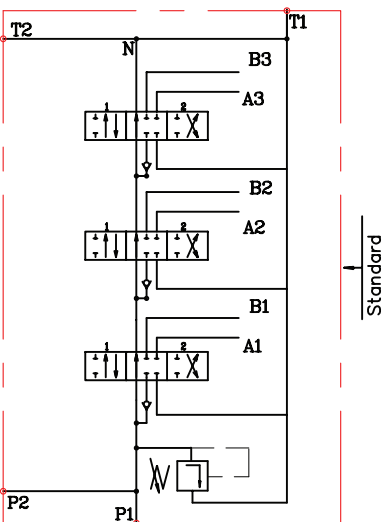


Table 3

code	Number of spools
1	1
2	2
3	3

ets.

Table 5

code	spool type
A	
B	
C	
D	
E	
F	
G	
H	
M	
N	
O	
P	
Q	
R	
S	
T	
L	

Table 4

code	Number of spools	code	way of distribution
1	1	1	parallel
2	2	2	tandem(series parallel)

Table 6

code	spool control
1	
2	
3	
4	
5	
6	
7	
8	
9	
10	
11	
12	
13	

Table 7

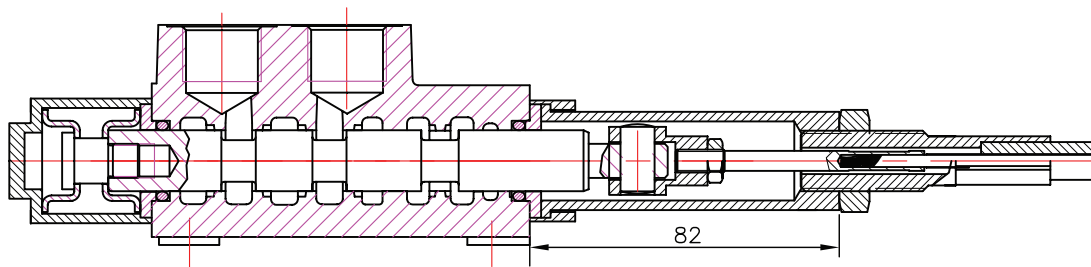
code	incorporated microswitch
E	<div> <p>mikroswitch type</p> <p>Omron-V 165 I C5</p> </div>

Table 8

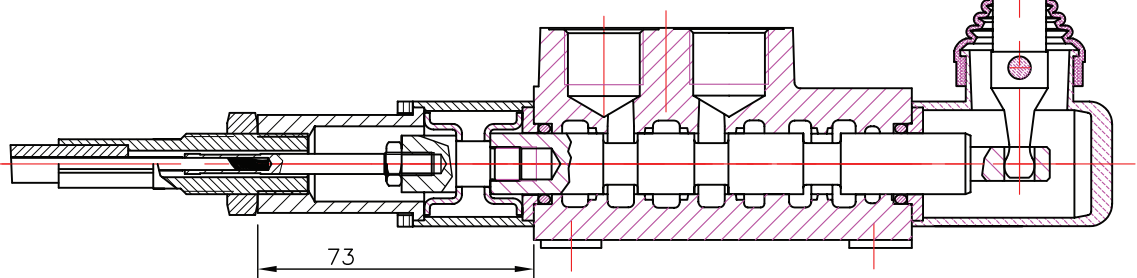
code	operation feature
P	<p>on-off pneumatic control; 5–10 bar ; ports G1/4</p>
H	<p>on-off hydraulic control ; pn = 5 – 20 bar ; ports G1/4</p>

directional control valve P80

REMOTE CONTROLS



P80 A1G V1(l=...)+ 3047
spool valve cable control body



P80 A1G V2KZ1(l=...)+ 3047
spool valve cable control body

Cable "INDEMAR" Cod. IT 3056 /l=1.00; 1.50; 2.00; 2.50; 3.00 m/

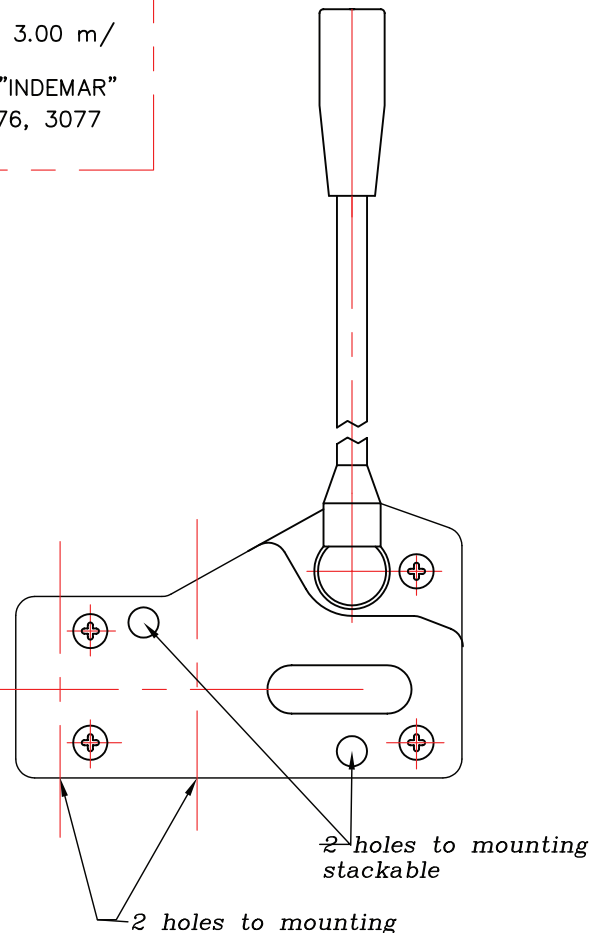
+control body "INDEMAR"
code 3047, 3076, 3077

Technical specifications

	3047	3076	3077
Stroke	13+13 mm	13+13 mm	13+13 mm
Max. load	45 kg	45 kg	45 kg
Level ratio	10:1	10:1	10:1
Lock in neutral	No	No	Yes
Antireverse lock	No	Yes	No
Body colour	Black	Black	Black
Cables type	Heavy Duty	Heavy Duty	Heavy Duty
Operating temperature	-40/+80C	-40/+80C	-40/+80C

High solidity controls for easy mounting on every type of distributor. They can be mounted stand alone or packed together.

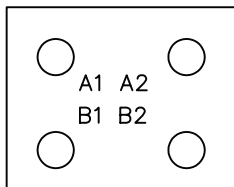
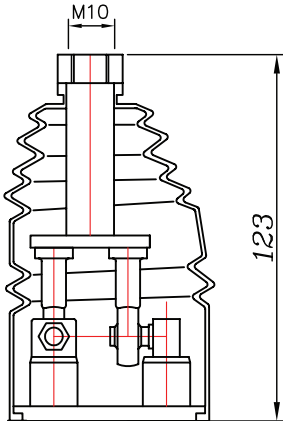
They use push-pull heavy duty cables that provide a positive smooth operating lever and are manufactured in three different models to meet different needs of Clients.



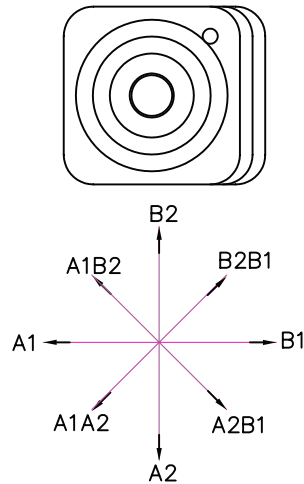
directional control valve P80

JOYSTICK "+"

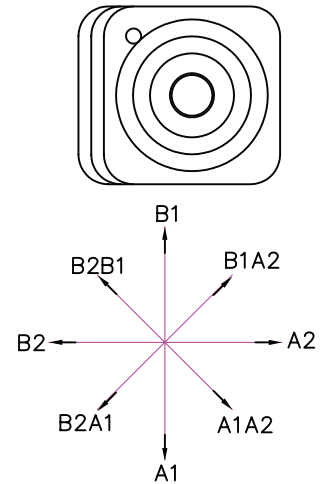
This control gives the possibility to operate, at the same time two spools with a "+" movement.



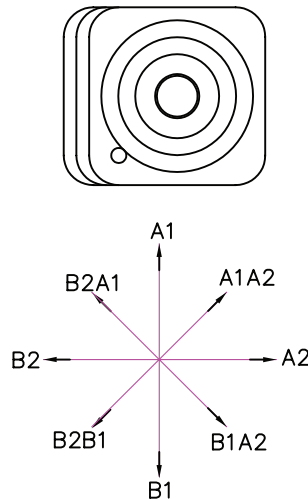
standard version 1



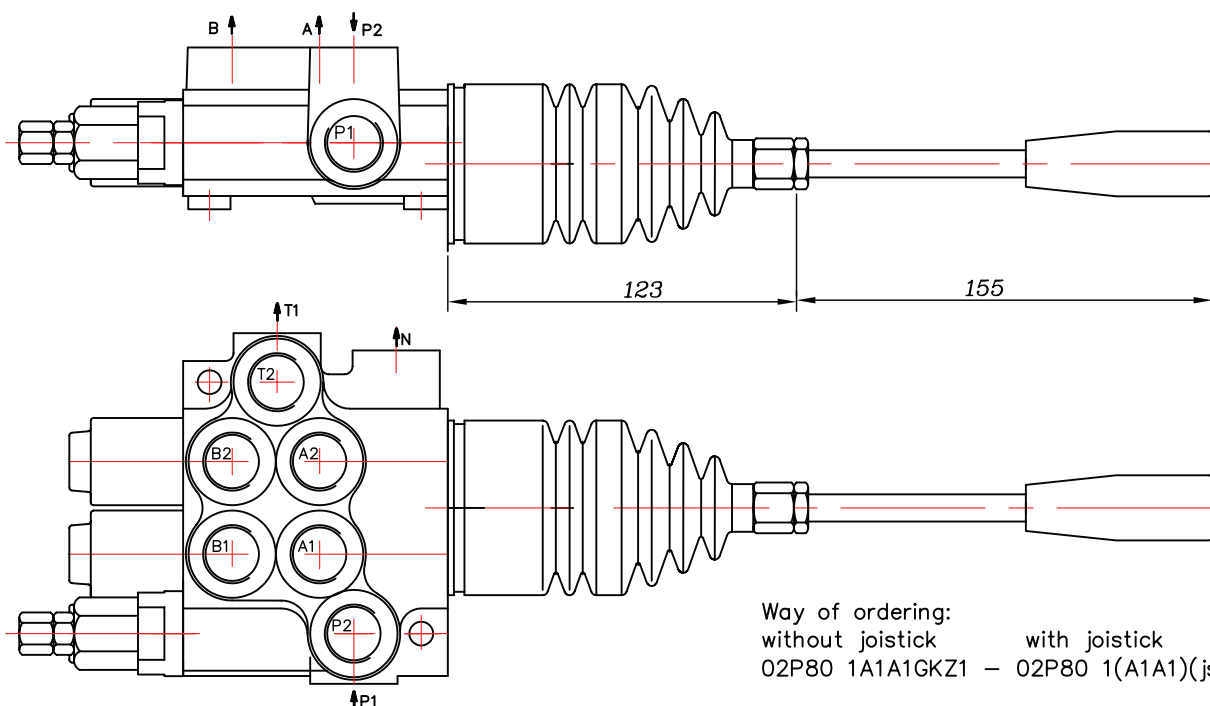
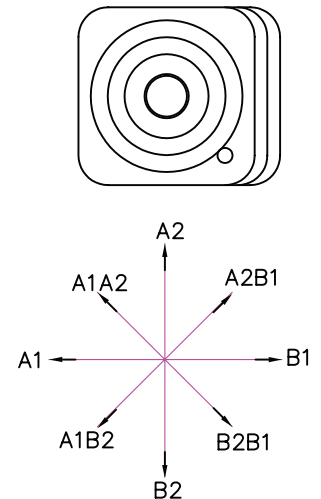
standard version 2



standard version 3



standard version 4



Way of ordering:
without joystick with joystick
02P80 1A1A1GKZ1 - 02P80 1(A1A1)(js+3)G