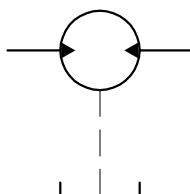


drain connection ($P_{\text{drain}} < 0,5 \text{ bar}$)
(Always connect directly to the tank)

Symbol



Type for 4xØ11:
30MR...X568HG(M)F

| Type | Displacement cm ³ | Pressure Pmax, [bar] | Speed n [min ⁻¹] | Dimensions | | | | | |
|-------------------|---------------------------------|-------------------------|---------------------------------|------------|-------|---------|--------|---------|--------|
| | | | | A | B | Inlet | | Outlet | |
| | | | | | | M | G | M | G |
| | | | | mm | | mm | " | mm | " |
| 30MR22.5X568HG(M) | 22.5 | 200 | 500 ... 2500 | 57.6 | 119.7 | M27x1.5 | G3/4-A | M27x1.5 | G3/4-A |
| 30MR25X568HG(M) | 25 | 200 | 500 ... 2500 | 58.3 | 121.1 | M27x1.5 | G3/4-A | M27x1.5 | G3/4-A |
| 30MR28X568HG(M) | 28 | 200 | 500 ... 2500 | 60.2 | 124.7 | M27x1.5 | G3/4-A | M27x1.5 | G3/4-A |
| 30MR32X568HG(M) | 32 | 200 | 500 ... 2500 | 66.5 | 137.3 | M33x1.5 | G1-A | M33x1.5 | G1-A |
| 30MR36X568HG(M) | 36 | 200 | 500 ... 2300 | 68 | 140.5 | M33x1.5 | G1-A | M33x1.5 | G1-A |
| 30MR42X568HG(M) | 42 | 200 | 500 ... 2300 | 70.8 | 146.1 | M33x1.5 | G1-A | M33x1.5 | G1-A |
| 30MR46X568HG(M) | 46 | 200 | 500 ... 2100 | 72.7 | 149.8 | M33x1.5 | G1-A | M33x1.5 | G1-A |
| 30MR50X568HG(M) | 50 | 200 | 500 ... 2100 | 74.5 | 153.4 | M33x1.5 | G1-A | M33x1.5 | G1-A |
| 30MR55X568HG(M) | 55 | 200 | 500 ... 1750 | 76.7 | 157.9 | M33x1.5 | G1-A | M33x1.5 | G1-A |
| 30MR60X568HG(M) | 60 | 180 | 500 ... 1750 | 78.7 | 162.4 | M33x1.5 | G1-A | M33x1.5 | G1-A |