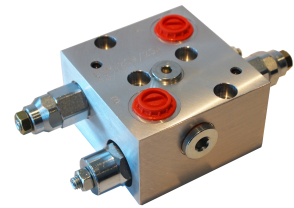
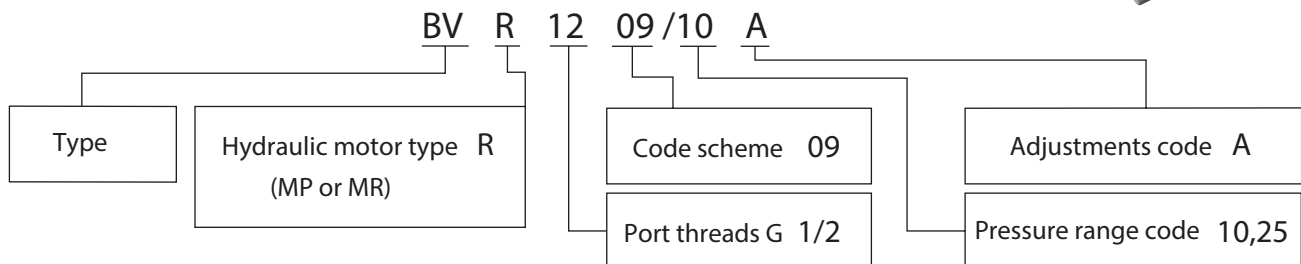



DIRECT MOUNTED VALVES - BVR

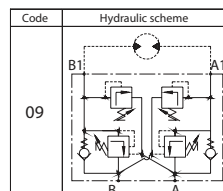
Relief/Overcentre, MP/MR Series



ORDERING CODE



Code	ADJUSTMENTS
A	<p>Leakproof hex. socket screw</p> 



SPECIFICATIONS

TECHNICAL DATA		
Max. pressure	bar	250
Nominal flow rate	L/min	50
Pressure ratio		4,25:1

PRESSURE RANGE			
Code	Standard setting bar (Q=5l/min)	Adj. pressure range bar	Colour
10	80	10...100	White
25	180	30...250	Yellow

DIMENSIONS

