



Solenoid operated directional valves

3 WE 6 E 60 / O G24 N Z4 / B0.8 V *

3	3=3-way, 4=4-way
WE	WE= Direct operated
6	Size 6;10
E	Spool type
60	Series Size 6=60; Size10=30
/	
O	No code=With spring return; O=Without spring return; OF=Without spring return, with detent
G24	G24=DC 24V; W220 =AC 220V; W110=AC 110V
N	No code=Without manual override; N=With manual override
Z4	Z4=Quadrate plug; Z5=Large quadrate plug; Z5L=Large quadrate plugwith light
/	
B0.8	No code=Without orifice insert; B08=Orifice size 0.8mm B10=Orifice size 1.0mm B12=Orifice size 1.2mm
V	No code=NBR seals for petroleum oils; V=FPM seals for phosphate ester
*	For further details

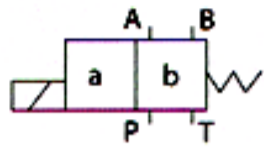
Technical Data

Size	6	10
Max. flow rate (L/min.)	60	120
Operating Pressure MPa	ABP oil port 35 T oil port 16	A,B,P oil port 31.5 T oil port 16



Solenoid operated directional valves

Directional Control Spool Symbols



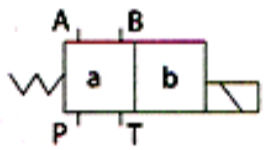
A



C



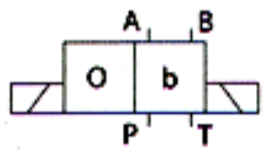
D



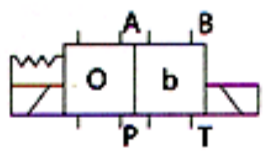
B



Y



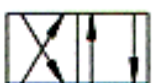
-/O



-/OF



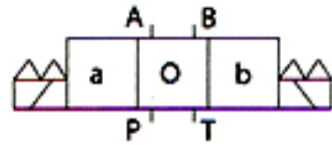
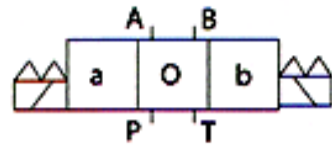
A



C



D



E



F



G



H



J



L



M



P



Q



R



T



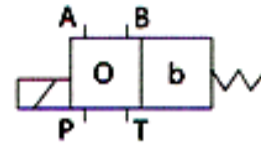
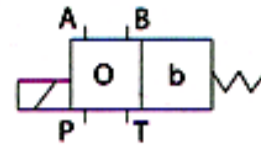
U



V



W



EA



FB



GA



HA



JA



LA



MA



PA



QA



RA



TA



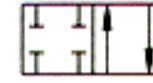
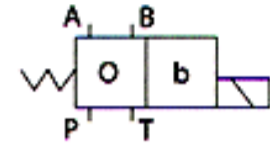
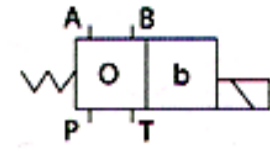
UA



VA



WA



EB



FB



GB



HB



JB



LB



MB



PB



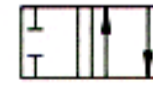
QB



RB



TB



UB



VB

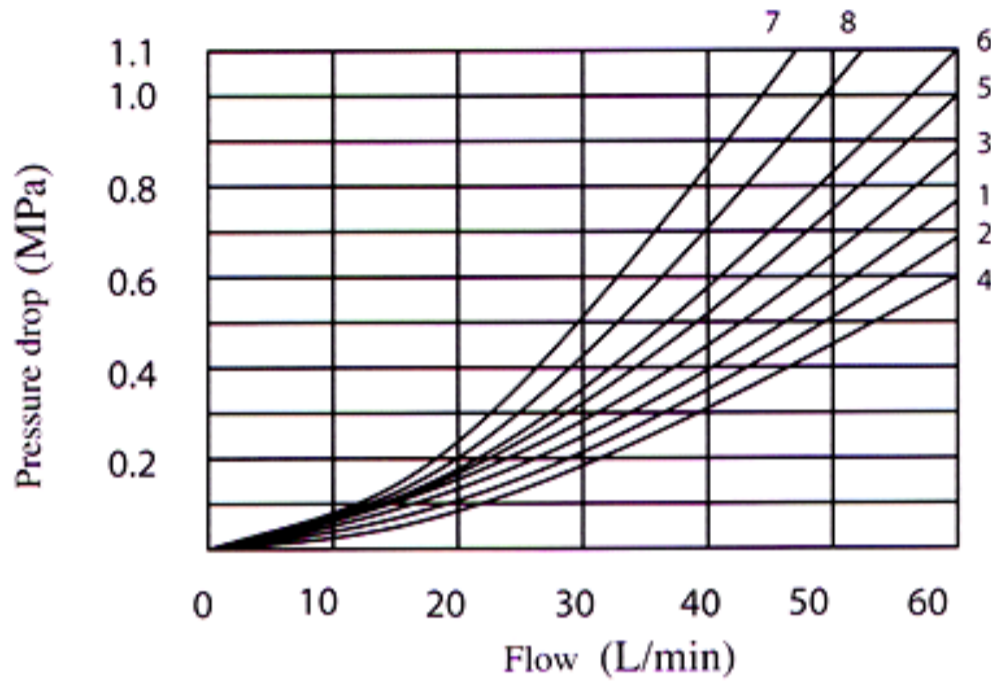


WB



Solenoid operated directional valves

WE6 Pressure drop Vs Flow cruves

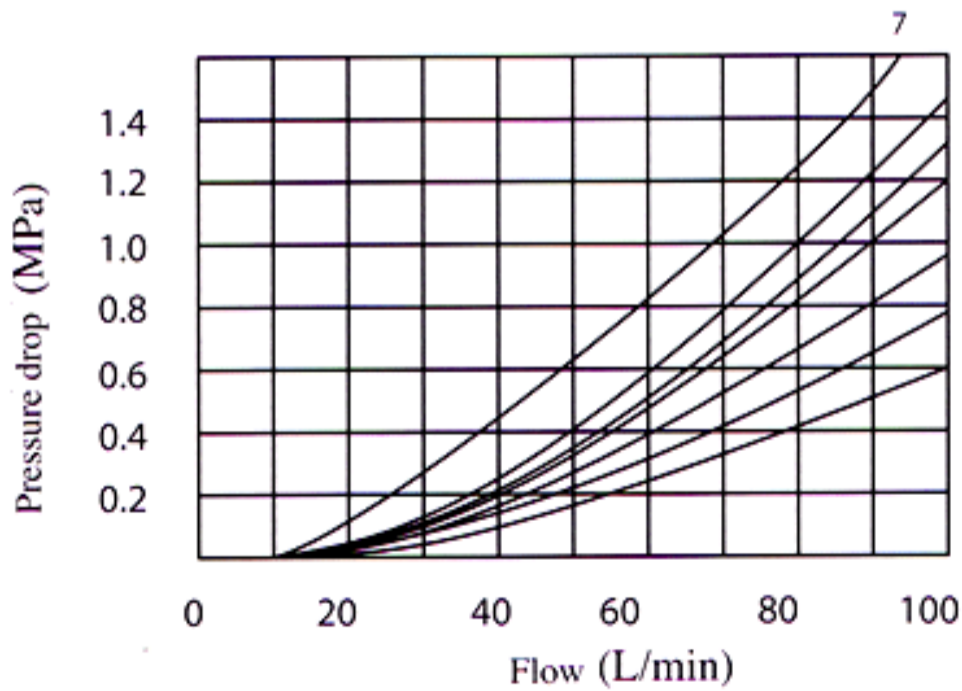


Point 7 is "R" spool on the b position, flow A-B

Point 8 is "G" spool on the middle position, flow P-T

Spool Symbols	Flow Direction			
	P-A	P-B	A-T	B-T
A	3	3		
B	3	3		
C	1	1	3	1
D	5	5	3	3
E	3	3	1	1
F	2	3	3	5
G	5	3	6	6
H	2	4	2	2
J	1	1	2	1
L	1	1	2	2
M	2	4	3	3
P	2	3	3	5
Q	1	1	2	1
R	5	5	4	
T		3	6	6
U	3	1	3	3
V	1	2	1	1
W	1	1	2	
Y	5	5	3	3

WE10 Pressure drop Vs Flow cruves



Point 7 is "R" spool on the b position, flow A-B

Point 4 is "G" and "T" spool on the middle position, flow P-T

Spool Symbols	Flow Direction			
	P-A	P-B	A-T	B-T
A, B	2	2		
C, D, Y, J	2	2	3	3
E, Q, V	2	2	4	4
F	2	3	3	5
G	3	3	4	6
H	1	1	4	5
L, U	2	2	3	5
M	1	1	5	5
P	3	2	5	3
R	2	4	3	
T	3	5	5	6
W	2	2	5	5