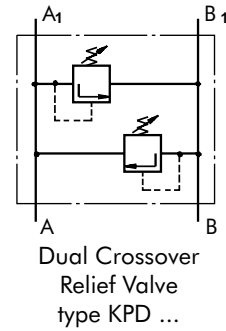
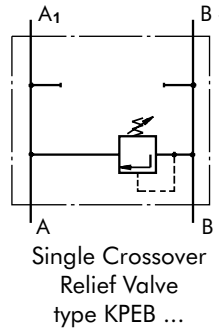
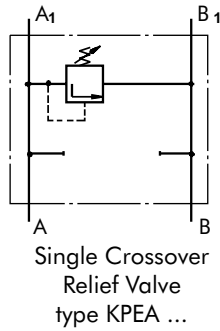


CROSSOVER RELIEF VALVES



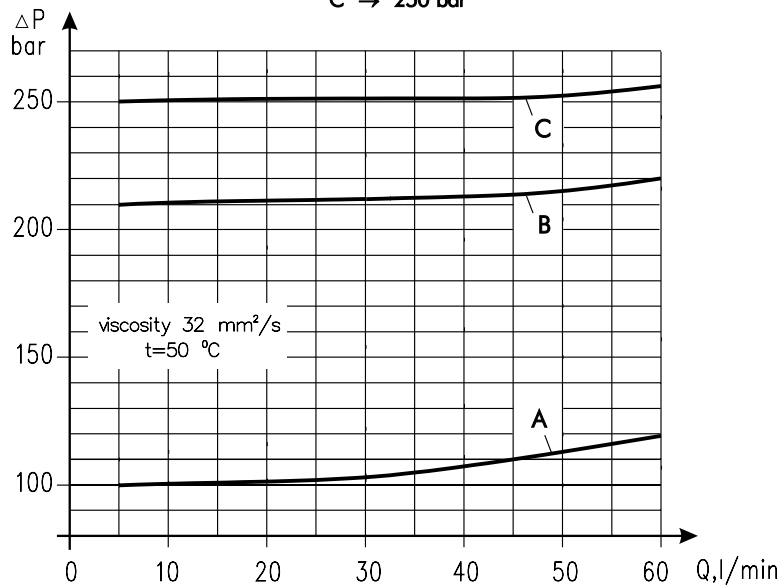
SPECIFICATION DATA

Parameters	Type			
	KPER	KPDR	KPES	KPDS
Flow Rate , l/min	60			
Rated Pressure*, bar	30 to 100; 50 to 210; 80 to 300			
Weight , kg	1,55		1,50	

*Pressure Settings are at flow rate of 5 l/min and viscosity 32 mm²/s (50 °C).

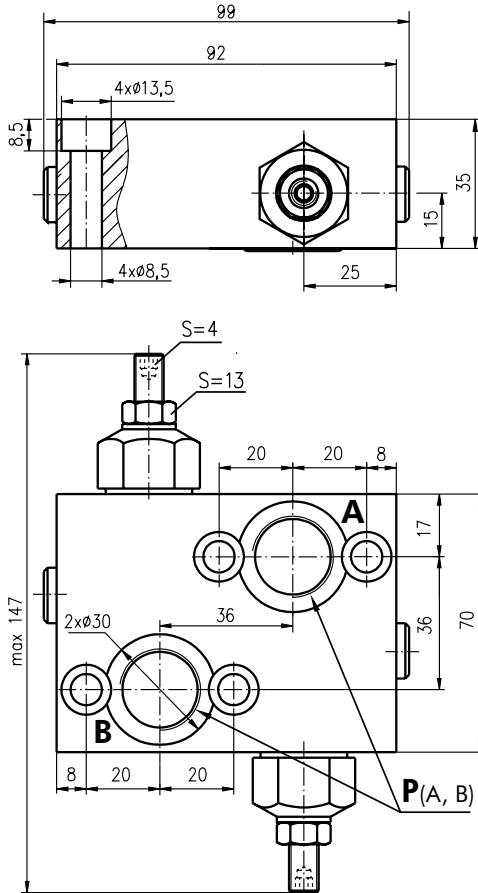
RATED PRESSURE

- A → 100 bar
- B → 210 bar
- C → 250 bar

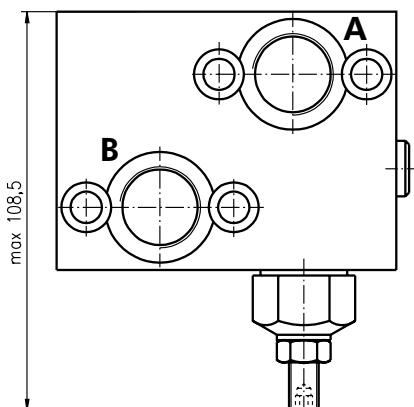


**VALVES FOR MP, MR, MH
HYDRAULIC MOTORS**

DUAL VALVE KPDR/...



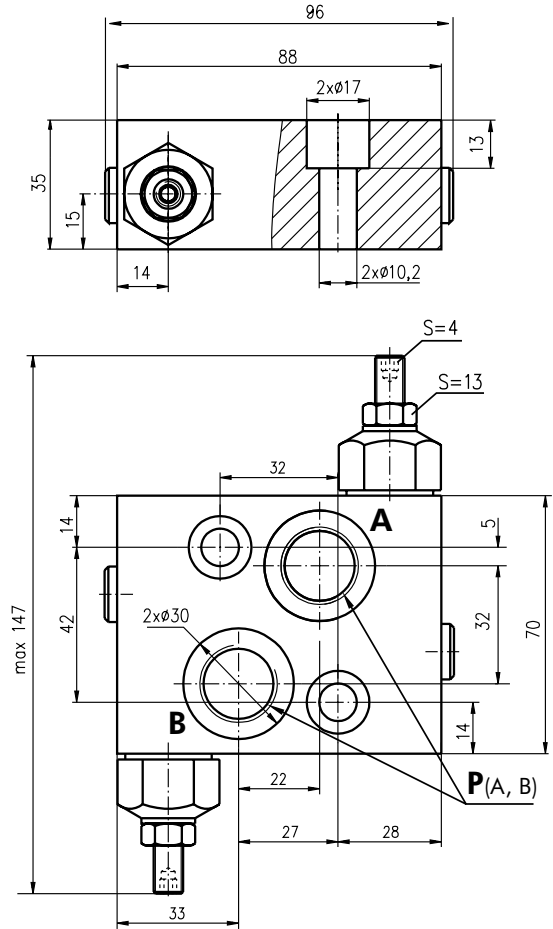
SINGLE VALVES KPER/...



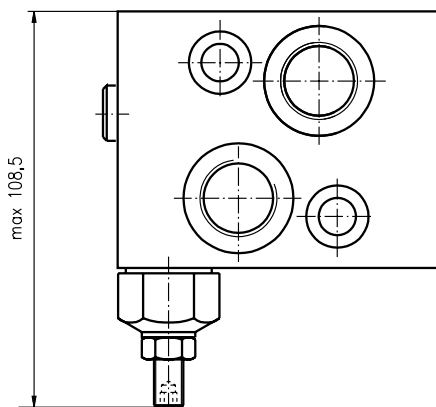
P_(A, B) : G1/2 (M22x1,5), 20 mm depth

**VALVES FOR MS
HYDRAULIC MOTORS**

DUAL VALVE KPDS/...



SINGLE VALVES KPES/...



P_(A, B) : G1/2 (M22x1,5), 20 mm depth

Note: -KPDR (KPER) Blocks are installed directly on MP and MR Motors with four bolts M8x40-8.8 DIN 912. Tightening torque 2^{+0,5} daNm.

-KPDS (KPES) Blocks are installed directly on MS Motors with two bolts M10x35-8.8 DIN 912. Tightening torque 4,5^{+0,5} daNm.

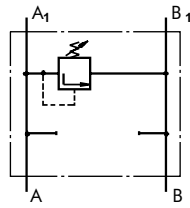
VALVE FOR MT HYDRAULIC MOTORS

SPECIFICATION DATA

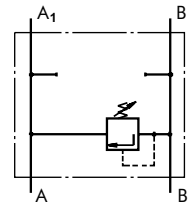


Parameters	Type	
	KPET	KPDT
Flow Rate , l/min	120	
Rated Pressure*, bar	80 to 210	
Weight , kg	5,10	5,54

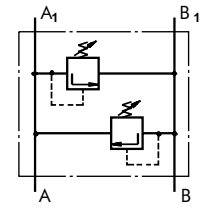
*Pressure Settings are at flow rate of 5 l/min and viscosity 32 mm²/s (50 °C).



Single Crossover Relief Valve type KPEAT ...

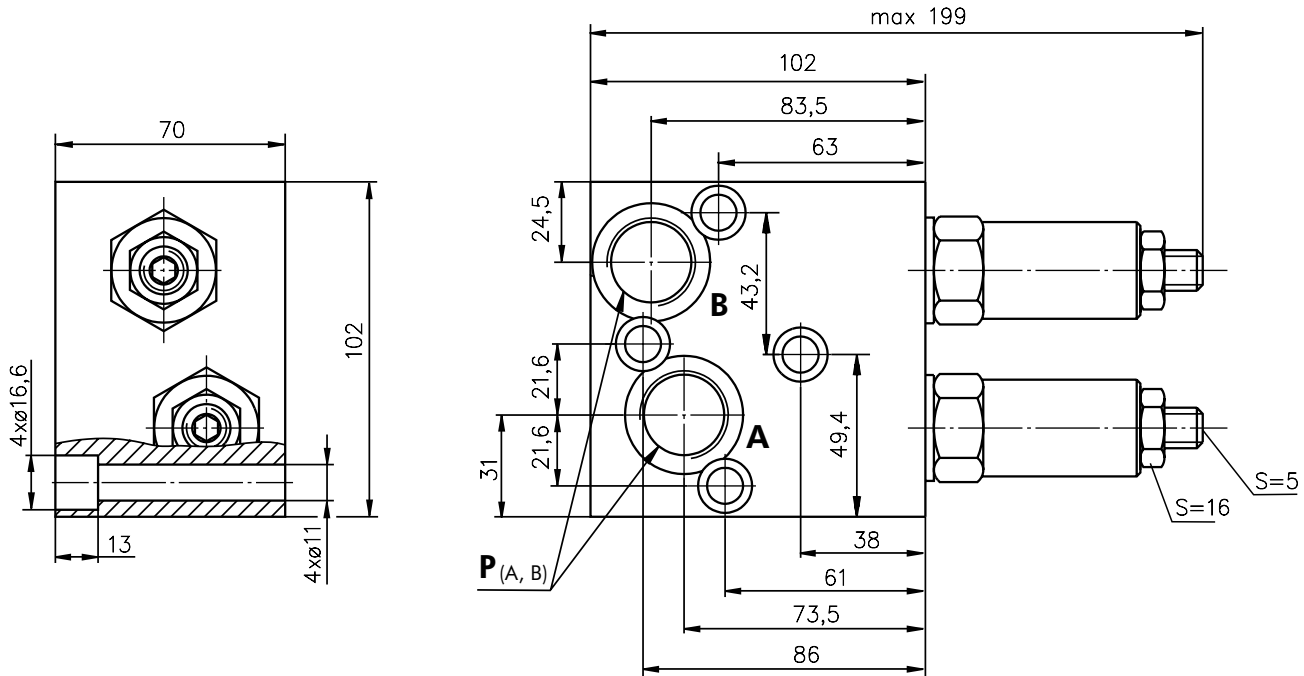


Single Crossover Relief Valve type KPEBT ...

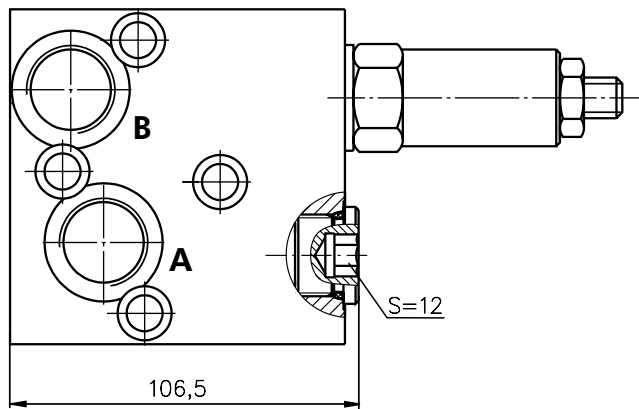


Dual Crossover Relief Valve type KPDT ...

DUAL VALVE KPDT .../...



SINGLE VALVE KPET.../...



P (A, B): G3/4 (M27x2), 20 mm depth

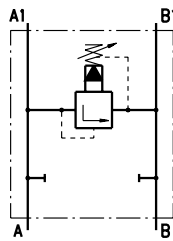
Note : KPDT (KPET) Blocks are installed directly on MT Motors with four bolts M10x70 - 8.8 DIN 912. Tightening torque 4,5^{+0.5} daNm.

VALVE FOR MV HYDRAULIC MOTORS

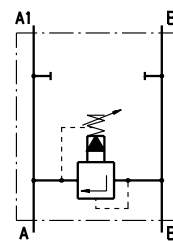
SPECIFICATION DATA

Parameters	Type		
	KPEAV	KPEBV	KPDV
Flow Rate , l/min	200		
Rated Pressure*, bar	10 to 100; 20 to 250		
Weight , kg	4,9	7,1	8,00

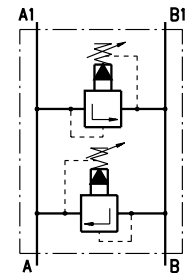
*Pressure Settings are at flow rate of 5 l/min and viscosity 32 mm²/s (50 °C).



Single Crossover Relief Valve type KPEAV ...

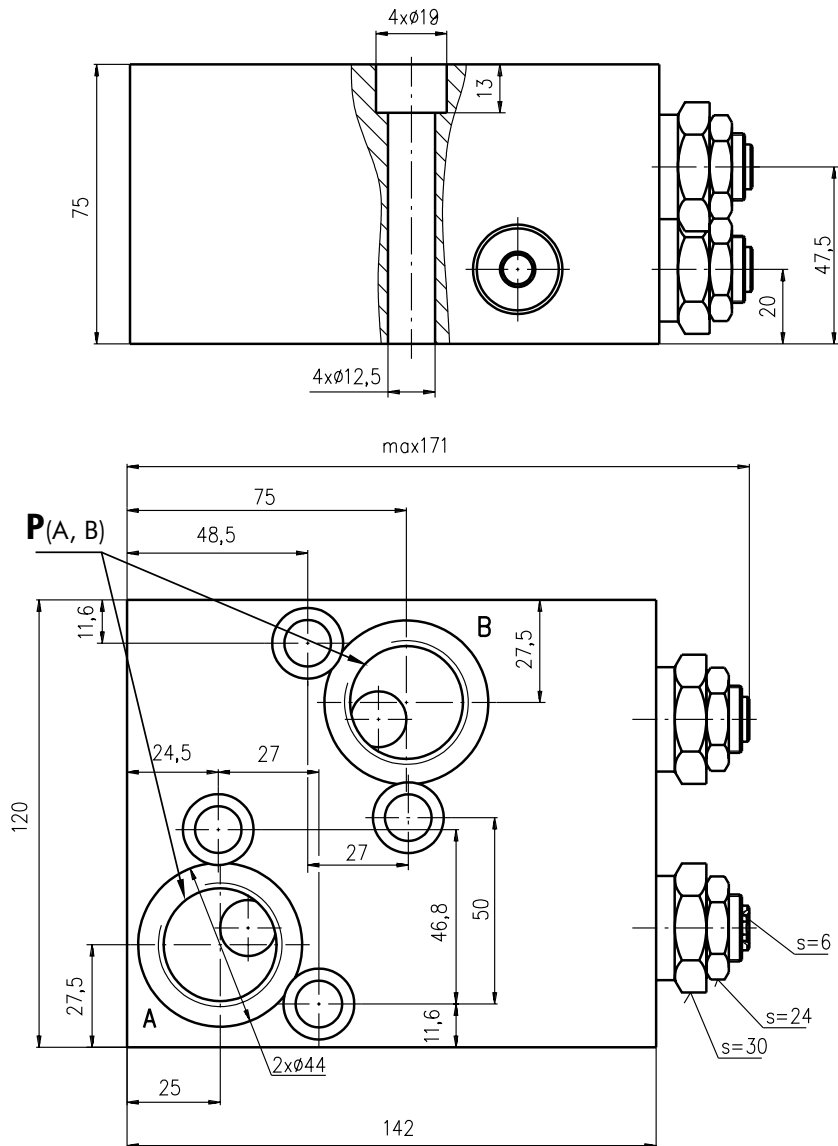


Single Crossover Relief Valve type KPEBV ...



Dual Crossover Relief Valve type KPDV ...

DUAL VALVE KPDV .../...

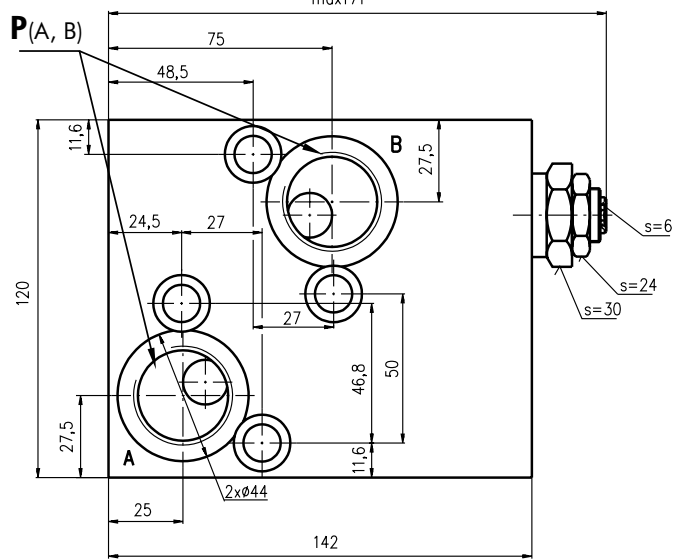
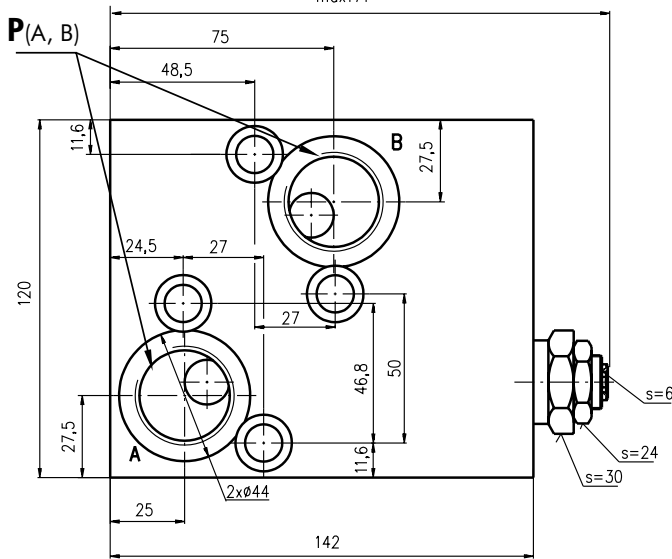
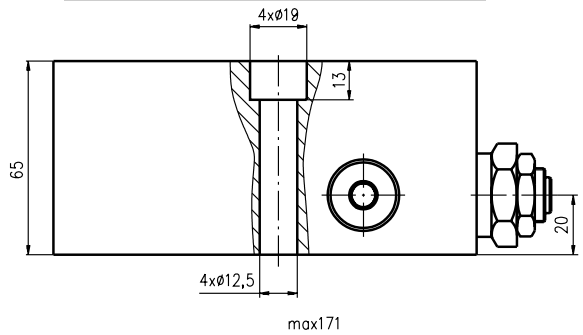
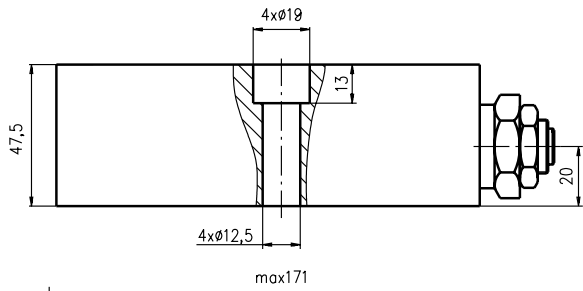


P_(A, B) : G1-A (M33x2), 20 mm depth

Note :KPDV Blocks are installed directly on MV Motors with four bolts M12x75 - 8.8 DIN 912. Tightening torque 7,5^{+0,5} daNm.

SINGLE VALVE KPEAV .../...

SINGLE VALVE KPEBV .../...



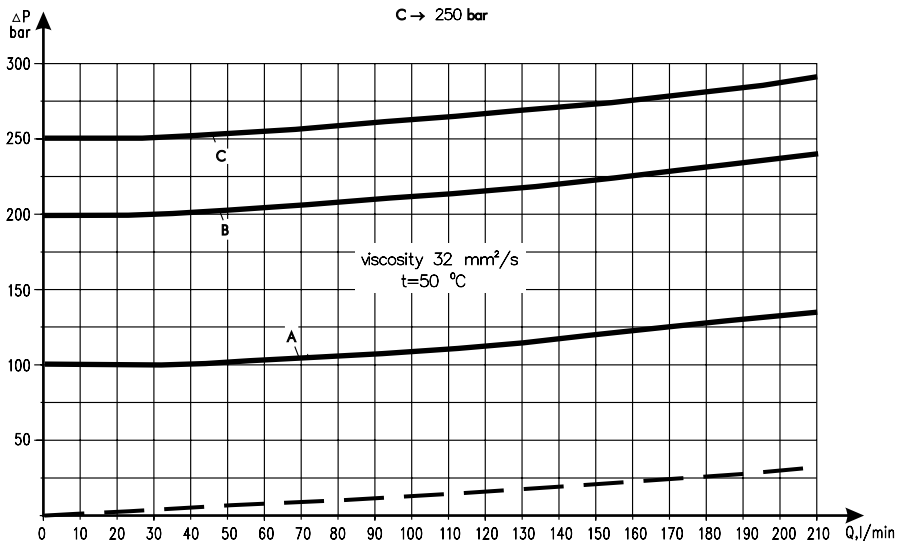
$P_{(A, B)}$: G1-A (M33x2), 20 mm depth

$P_{(A, B)}$: G1-A (M33x2), 20 mm depth

Note :KPEAV Blocks are installed directly on MV Motors with four bolts M12x50 - 8.8 DIN 912.
KPEBV Blocks are installed directly on MV Motors with four bolts M12x65 - 8.8 DIN 912.
Tightening torque $7,5^{+0,5}$ daNm.

Rated Pressure

- A → 100 bar
- B → 200 bar
- C → 250 bar



ORDER CODE - OVERCENTER VALVES WITH BRAKE CONTROL

	1	2	3	4	5	6	7
K P B		-	/	/			

Pos.1 - Housing Type

- R** - Valve block for MP, MR and MH Motors
- S** - Valve block for MS Motors
- T** - Valve block for MT Motors
- V** - Valve block for MV Motors

Pos.2 - Rated Pressure, bar

- 250** - 70÷250, Std Setting 250 bar@5 lpm

Pos.3 - Pilot Ratio

- 1** - 4,25 : 1

Pos.4 - Number of Valves

- D** - Two Valves - Dual
- EA** - One Valve on line A - Single
- EB** - One Valve on line B - Single

Pos.5 - Ports

- omit - BSPP (ISO 228)
- M** - Metric (ISO 262)

Pos.6 - Option (Paint)*

- omit - no Paint
- P** - Painted
- PC** - Corrosion Protected Paint

Pos.7 - Design Series

- omit - Factory specified

NOTES:

* The color is by customer's request.

ORDER CODE - SWITCH VALVES

	1	2	3	4
K P W				

Pos.1 - Housing Type

- R** - Valve block for MP, MR and MH Motors
- S** - Valve block for MS Motors
- T** - Valve block for MT Motors
- V** - Valve block for MV Motors

Pos.2 - Ports

- omit - BSPP (ISO 228)
- M** - Metric (ISO 262)

Pos.3 - Option (Paint)*

- omit - no Paint
- P** - Painted
- PC** - Corrosion Protected Paint

Pos.4 - Design Series

- omit - Factory specified

NOTES: * The color is by customer's request.

ORDER CODE - CROSSOVER RELIEF VALVES

	1	2	3	4	5	6
K P			/	/		

Pos.1 - Number of Valves

- D** - Two Valves - Dual
- EA** - One Valve on line A - Single
- EB** - One Valve on line B - Single

Pos.2 - Housing Type

- R** - Valve block for MP, MR and MH Motors
- S** - Valve block for MS Motors
- T** - Valve block for MT Motors
- V** - Valve block for MV Motors

Pos.3 - Max. pressure range, bar (see page 21 and 24)

- 100*** - 30÷100, Std Setting 100 bar@5 lpm
- 210*** - 50÷210, Std Setting 210 bar@5 lpm
- 300*** - 80÷300, Std Setting 250 bar@5 lpm
- 210**** - 80÷210, Std Setting 210 bar@5 lpm
- 100***** - 10÷100, Std Setting 100 bar@5 lpm
- 250***** - 20÷250, Std Setting 250 bar@5 lpm

Pos.4 - Ports

- omit - BSPP (ISO 228)
- M** - Metric (ISO 262)

Pos.5 - Option (Paint)****

- omit - no Paint
- P** - Painted
- PC** - Corrosion Protected Paint

Pos.6 - Design Series

- omit - Factory specified

NOTES:

* Useful for types **R** and **S** only .

** Useful for types **T** only .

*** Useful for types **V** only .

**** The color is by customer's request.

The Valve Blocks are mangano-phosphatized as standard.